



Strategic Plan Updates and Projects

Carolina Bourque | GSMFC Meeting |
March 15, 2022

Louisiana Oyster Strategic Plan

- Draft submitted to legislators Dec 2020
- Overall Goals
 - Increase oyster density
 - Expand oyster resource in POSG
 - Expand oyster resource resilience:
 - Habitat improvement projects
 - Development and protection of spawning reefs
 - Research to develop a low-salinity tolerant oyster
 - Provide resilience to oyster industry by offering options to expand operations into Alternative Oyster Aquaculture (AOC), such as off-bottom cage culture

<https://www.wlf.louisiana.gov/assets/Resources/Publications/Oyster/Final-Draft---Oyster-Strategic-Plan---12.30.20.pdf> .



Louisiana Oyster Strategic Plan

Initiatives

1. Traditional Cultch Planting and Water-Bottom Mapping
2. Cultch Planting with Remote-Set Oysters
3. Development of Spawning Stock Sanctuary Network
4. Expansion of Alternative Oyster Aquaculture
5. Private Oyster Lease Rehabilitation (POLR) Program
6. Expansion of Hydrologic Monitoring
7. Evaluation of Leases Incapable of Oyster Production
8. Establishment of Cultivation and Production Requirements on Leases
9. Establishment of New Public Oyster Areas
10. Mississippi River Gulf Outlet Hydrologic Evaluation (MRGO)
11. Evaluation of the Restoration Bohemia Spillway Water Control Structure
12. Research and Development

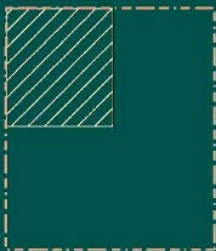


2021 Mozambique Bay Broodstock Reef



Approximate Reef Corners:

29° 37' 13.740" N, 89° 29' 24.860" W
29° 37' 13.608" N, 89° 29' 21.296" W
29° 37' 10.188" N, 89° 29' 21.415" W
29° 37' 10.309" N, 89° 29' 24.955" W



Black Bay

Mozambique Point

2.5 Acre Broodstock Reef
(see top inset)



Breton Sound

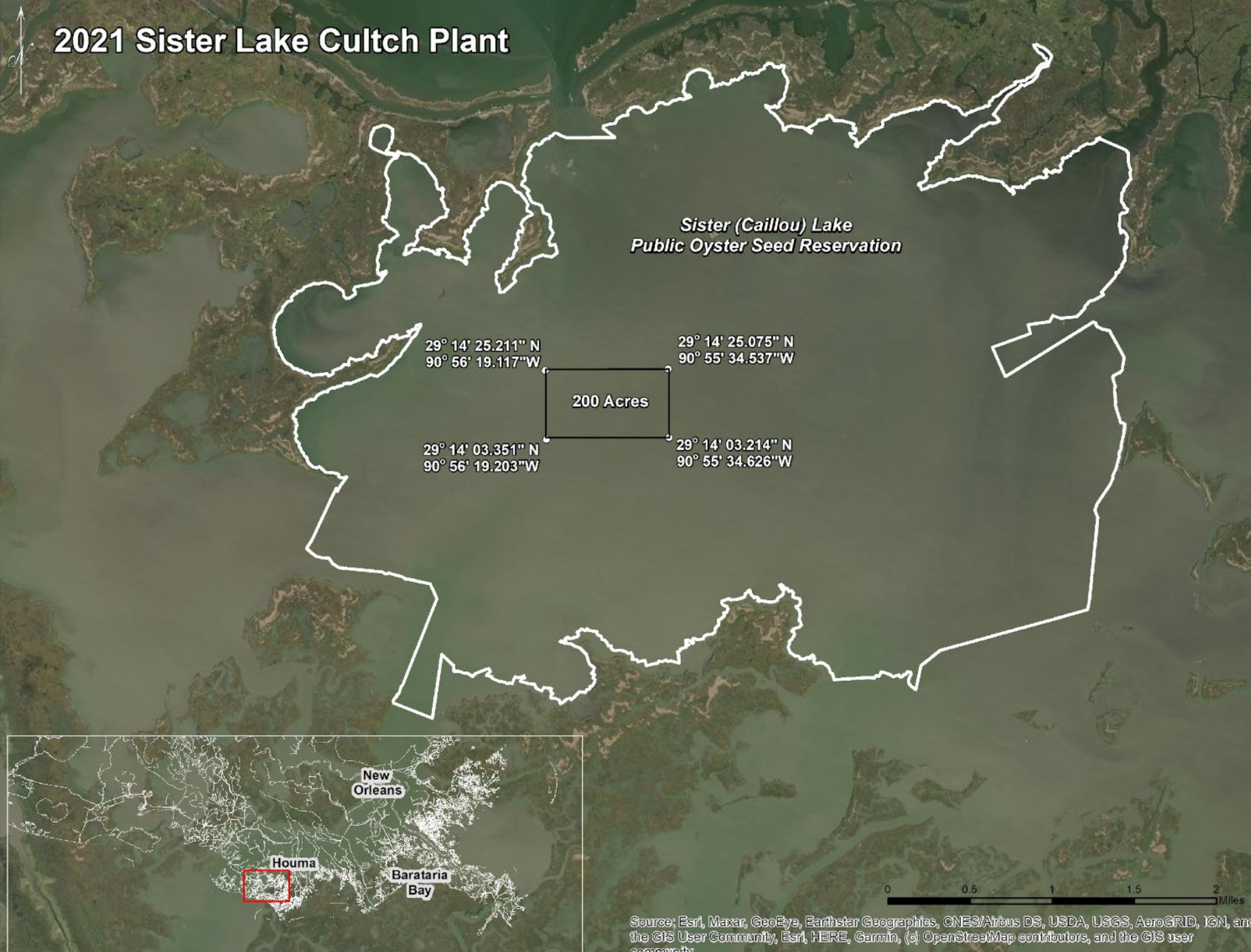


- Approximate Reef Location
- 10-Acre Permit Area
- Public Oyster Seed Ground Boundary



Source: Esri, Maxar, GeoEye, Earthstar Geographics, CNES/Airbus DS, USDA, USGS, AeroGRID, IGN, and the GIS User Community, Esri, HERE, Garmin, (c) OpenStreetMap contributors, and the GIS user community

2021 Sister Lake Cultch Plant



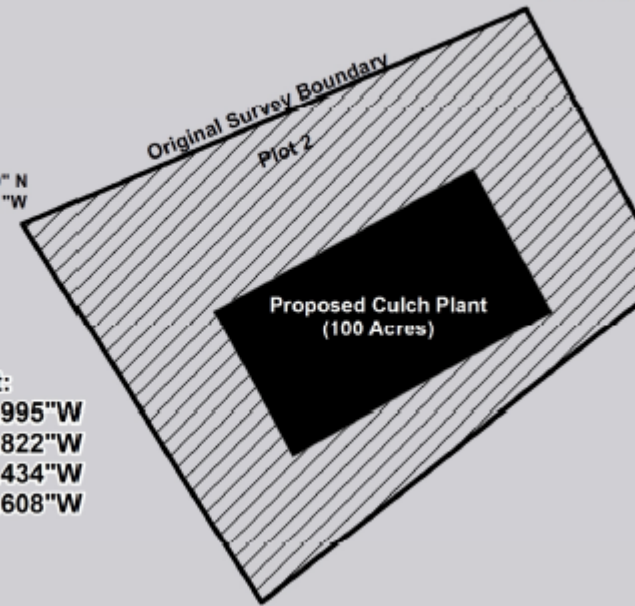
Source: Esri, Maxar, GeoEye, Earthstar Geographics, CNES/Airbus DS, USDA, USGS, AeroGRID, IGN, and the GIS User Community, Esri, HERE, Garmin, (c) OpenStreetMap contributors, and the GIS user community

Drum Bay Cultch Plants

- To be constructed in spring
 - Bid window open now (OSP)
 - Bid opening Feb. 8
 - Two 100-acre plants
 - 13,500 yards per reef (~4" pieces)
 - Funding through NRDA

29° 54' 12.6
89° 16' 43.8

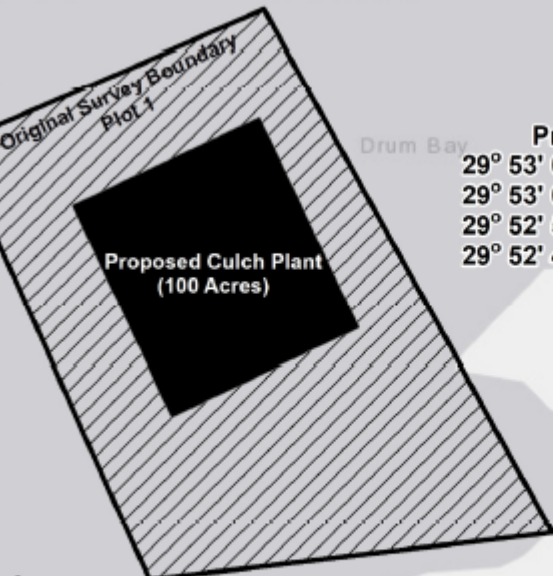
29° 53' 55.360" N
89° 17' 30.601" W



Proposed Culch Plant:
 29° 53' 48.333" N, 89° 17' 12.995" W
 29° 53' 59.867" N, 89° 16' 48.822" W
 29° 53' 48.227" N, 89° 16' 41.434" W
 29° 53' 36.691" N, 89° 17' 05.608" W

29° 53' 24.837" N
89° 17' 08.500" W

29° 53' 18.409" N
89° 19' 07.703" W



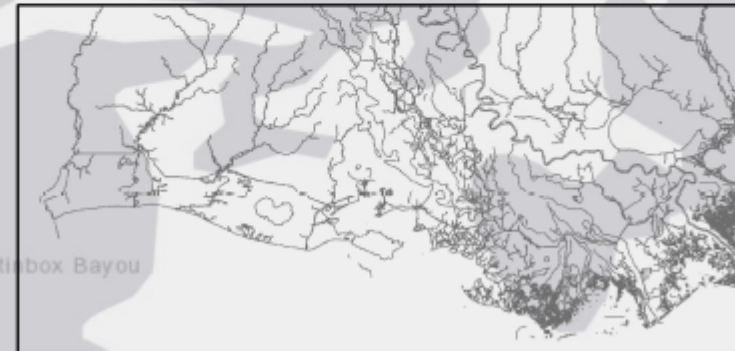
Drum Bay

Proposed Culch Plant:
 29° 53' 02.626" N, 89° 19' 25.590" W
 29° 53' 09.765" N, 89° 19' 08.090" W
 29° 52' 52.686" N, 89° 18' 58.820" W
 29° 52' 45.548" N, 89° 19' 16.327" W

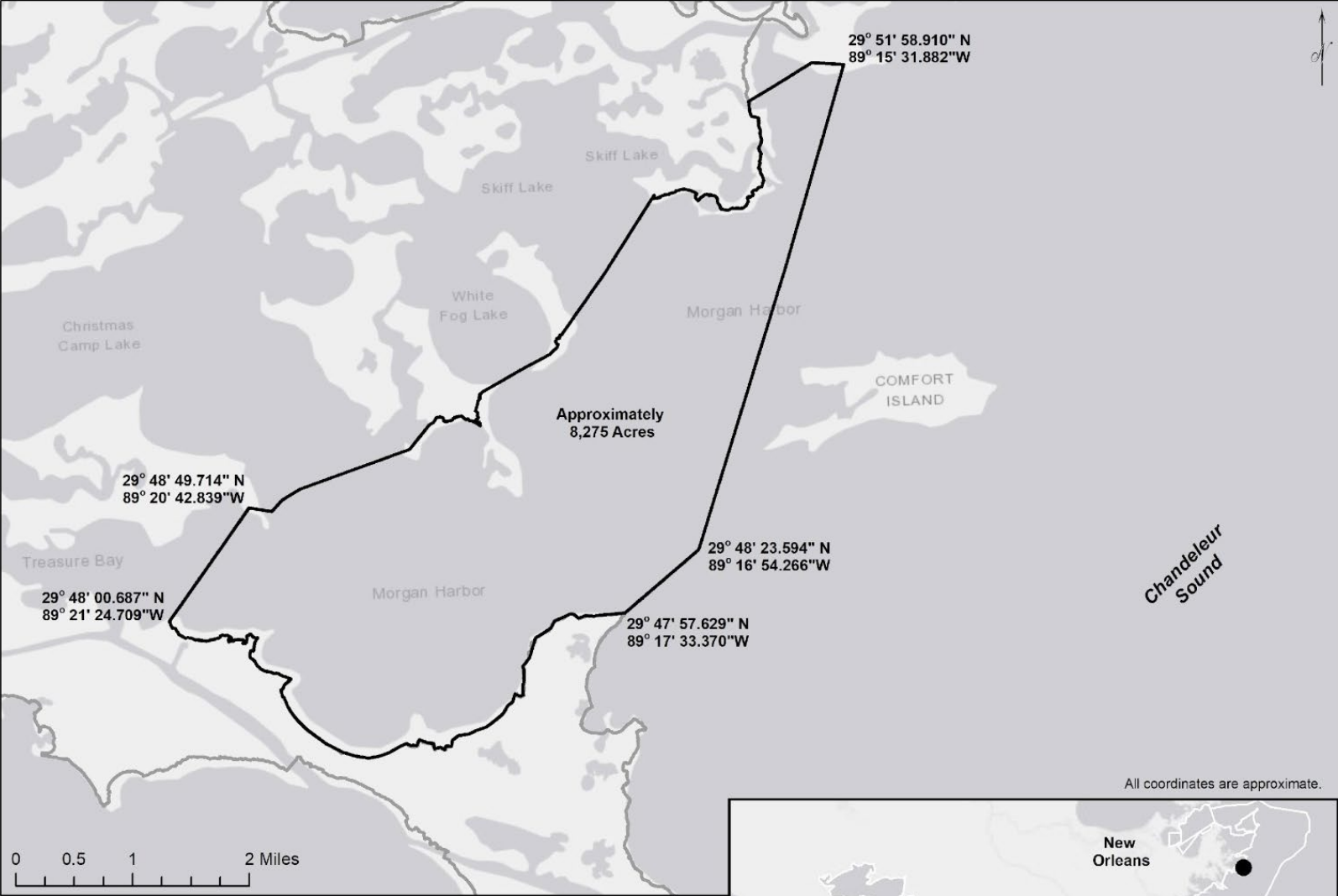
29° 52' 36.238" N
89° 10' 40.010" W

29° 52' 32.400" N
89° 19' 18.340" W

Martinbox Bayou



Water Bottom Survey – Morgan Harbor



2021 Morgan Harbor Water Bottom Survey



Hatchery Spat-on-Shell (SoS)

- Producing and setting 4 million spat set on recycled oyster shells
- Transport and Deployments in 2021 to different reefs



Alternative Oyster Culture Expansion

- Louisiana Sea Grant contract
- <https://www.laseafoodfuture.com/aoc>

Alternative Oyster Culture

Alternative Oyster
Culture

AOC Resources

Salinity and LDH Closure
Maps

LSG Statement of
Purpose

Grants for Enhancement and Expansion of **AOC**

Louisiana Sea Grant (LSG) has received a \$3 million grant from the Louisiana Department of Wildlife and Fisheries (LDWF) to expand alternative oyster culture (AOC) throughout the coast. Of the total, \$1.8 million is designated for grants awarded by Iberia Development Foundation (IDF), a 501-C3 organization, to selected AOC operators.

Identified as an important adaptation strategy by people in the oyster industry during Louisiana's Seafood Future workshops and surveys, this AOC grant program is in response to industry suggestion; offering direct economic development assistance.

Basic details of the grant program and applications can be found on this page; or visit the La Fisheries Forward (LFF) site for practical information on running an AOC facility.

LSG is now accepting applications for grants. See press release below, as well as a link to a recording of our December Zoom meeting on the Scoring Process.



Oysters Tolerant to Low Salinity

- Contract with UL Lafayette
- LO-SPAT will apply expertise in coastal ecology, environmental monitoring, organismal biology, economics, aquaculture and other disciplines to ensure that oyster populations survive ongoing environmental challenges in support of the Louisiana
- <https://www.lospat.org/>

